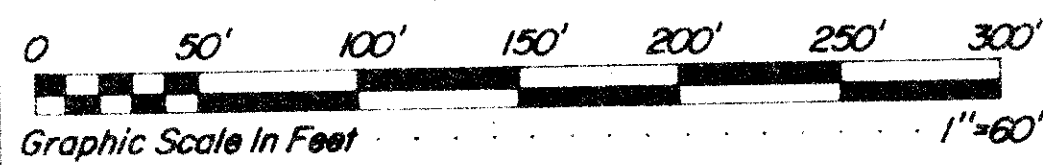
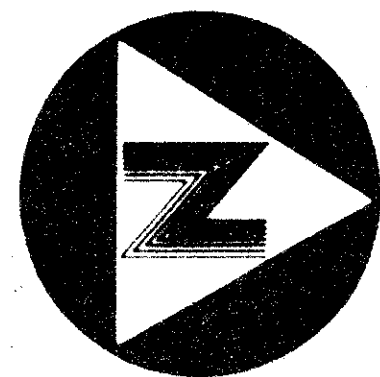


DRAWING NUMBER
55/8

Being Re-platted / P.B. 60 / P. 60-62



Florida Fruitlands Companies' Subdivision No. 2 (P.B. 1, Pg. 102)

Unplatted

8

State of Florida)
County of Palm Beach)
This plat was filed for record at this day of A.D. 1986, and duly recorded in Plat Book on pages and
John B. Dunkle,
Clerk of the Circuit Court
By: _____

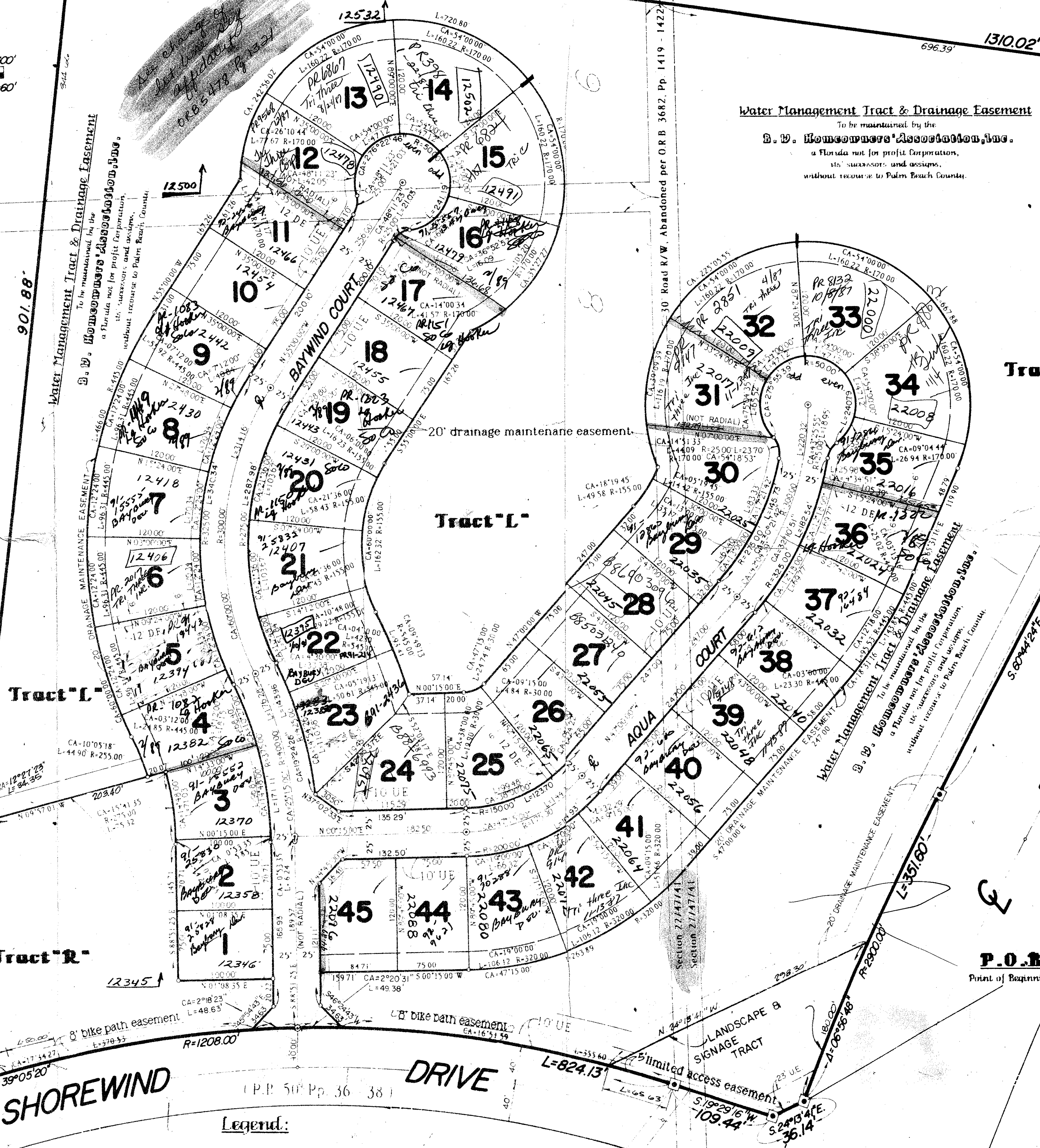
Water Management Tract & Drainage Easement
To be maintained by the
B. W. Homeowners' Association, Inc.
a Florida not for profit corporation,
its successors and assigns,
without recourse to Palm Beach County.

Florida Fruitlands Companies' Subdivision No. 2 (P.B. 1, Pg. 102)

DRAWING NUMBER

DRAWING NUMBER

DRAWING NUMBER



Tract "L"

Tract "L"

Tract "L"

Tract "R"

PALMETTO PARK ROAD
(O.R.B. 3600, Pp. 1621-1624)

SHOREWIND DRIVE
(P.B. 50 Pp. 36-38)

0208-008
UNPLATTED
27/07/01

Table with 2 columns: Field Name, Value. Includes SUBDIVISION, BOOK, FLOOD ZONE, QUAD, SE, PUB NAME.

ADO. BY [Signature]
CHECKED BY [Signature]

- Legend:
• Denotes a permanent reference monument.
• Denotes a permanent control point.
D.E. Denotes a drainage easement
U.E. Denotes a utility easement

NOTE: ALL LOT LINES ARE RADIAL, UNLESS OTHERWISE NOTED

BOCA WINDS - PARCEL 'N'
A PART OF BEACH WINDS PLANNED UNIT DEVELOPMENT
LYING IN SECTIONS 22 & 27, TOWNSHIP 47 SOUTH, RANGE 47 EAST
SECTION 22 & 27, TOWNSHIP 47 SOUTH, RANGE 47 EAST
STATE 200, WEST PALM BEACH, FLORIDA 33415
BEING A REPLAT OF A PORTION OF TRACTS 7, 8 & 9, FLORIDA FRUITLANDS COMPANIES' SUBDIVISION NO. 2, P.B. 1, PG. 102, OF THE PUBLIC RECORDS OF THE COUNTY OF PALM BEACH, STATE OF FLORIDA.
SHEET 3 OF 3

BENCH MARK land surveying and mapping, inc.
Record Plat
Boca Winds - Parcel "N"
OWN pg. 55, ENCL. 1, DATE 7/25/85, W.D. NO. 153
SCALE: SHOWN, SIZE: 11x17, SHEET: 8 OF 8